

# Socially Conscious Communities:

A New (or OLD) Paradigm in Sheltering



The Association for  
**Animal Welfare**  
Advancement



1

## THE Association's Mission:

*The Association for Animal Welfare Advancement develops strong leaders, promotes standards of practice, and cultivates collaboration to advance the animal welfare profession with a unified voice.*



The Association for  
**Animal Welfare**  
Advancement



2

**"PROGRESS**  
*is* IMPOSSIBLE  
WITHOUT CHANGE,  
& those who cannot  
CHANGE THEIR *minds*  
**CANNOT**  
CHANGE *Anything."*

The Association for  
**Animal Welfare**  
Advancement

*- George Bernard Shaw*



3

Socially Conscious  
Animal Community.

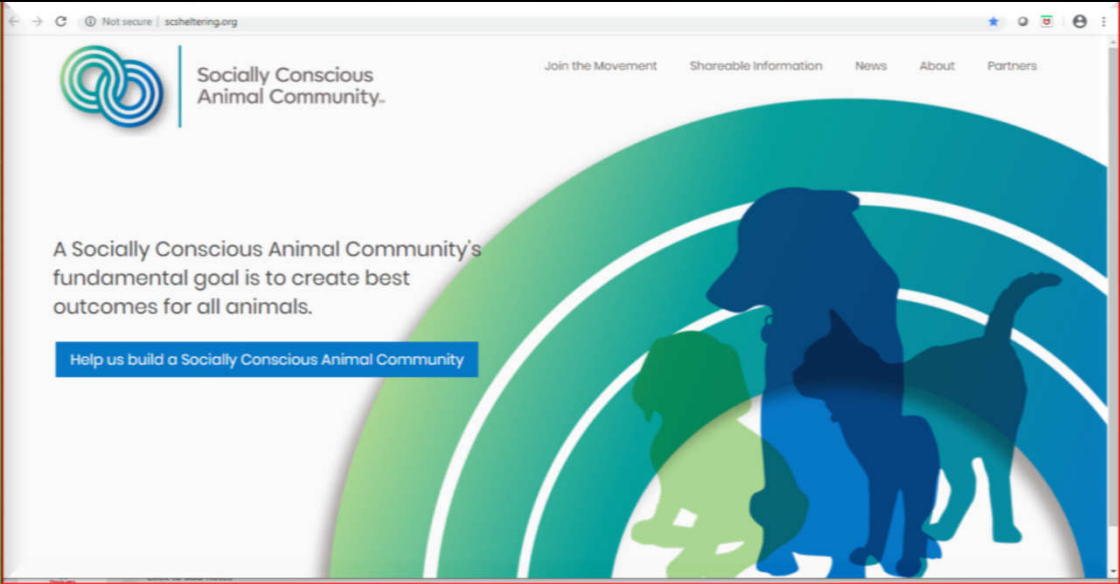
Join the Movement | Shareable Information | News | About | Partners

A Socially Conscious Animal Community's  
fundamental goal is to create best  
outcomes for all animals.

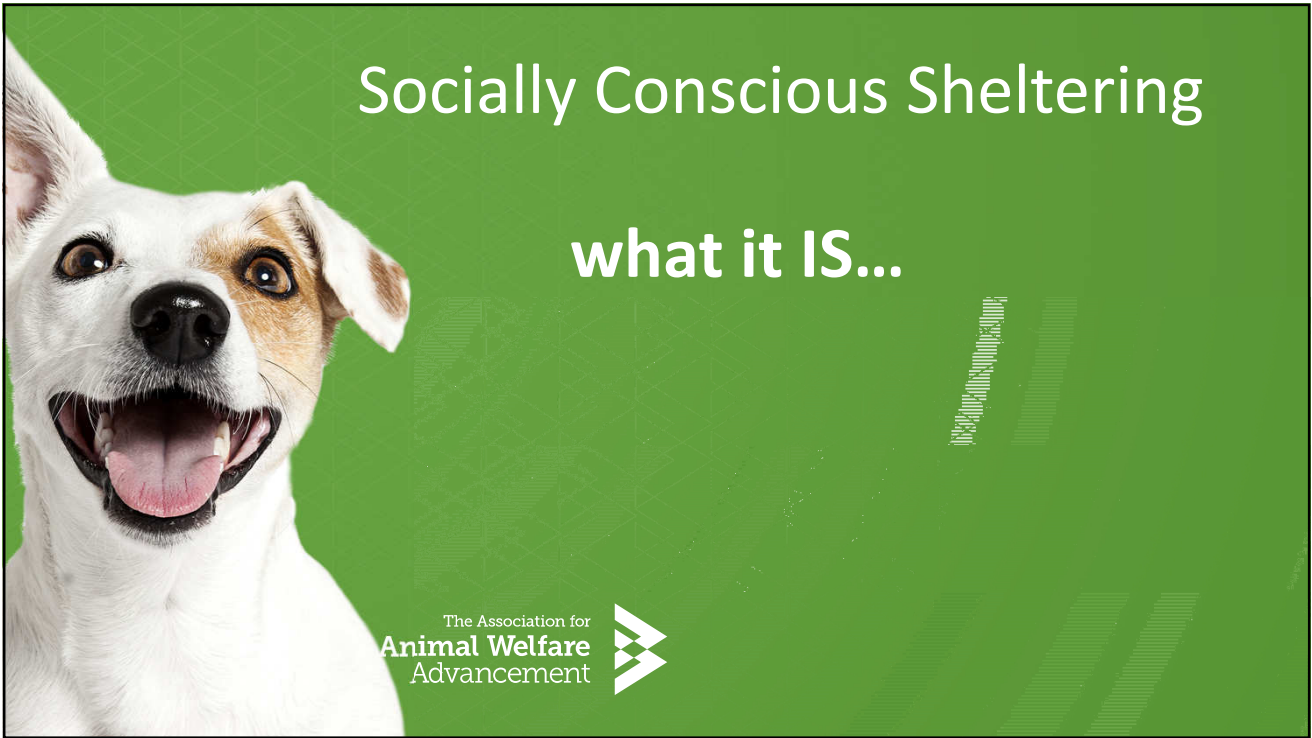
Help us build a Socially Conscious Animal Community

The Association for  
**Animal Welfare**  
Advancement

**scsheltering.org**



4



5



6



**Ensure every unwanted or homeless pet has a safe place to go for shelter and care.**



The Association for  
**Animal Welfare**  
Advancement



7

**Place every healthy and safe animal**



The Association for  
**Animal Welfare**  
Advancement



8

needs of homeless animals and ensure these needs are thoughtfully addressed.



The Association for  
**Animal Welfare**  
Advancement



9

Align shelter policy with the needs of the community.



The Association for  
**Animal Welfare**  
Advancement



10

**Alleviate suffering and make appropriate euthanasia decisions.**



The Association for  
**Animal Welfare**  
Advancement



11

**Enhance the human-animal bond through safe placements and post adoption support.**



The Association for  
**Animal Welfare**  
Advancement



12



safety of animals for each  
community when transferring  
animals.



13

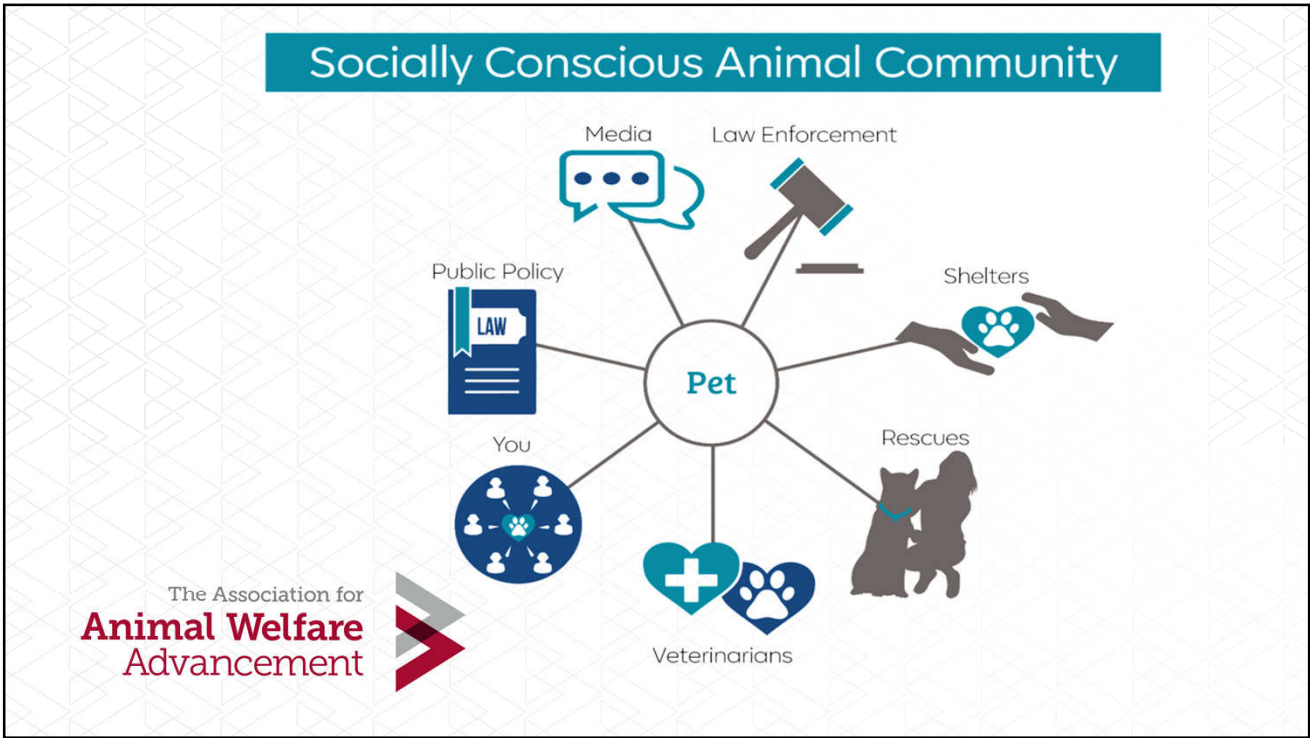
ethical decision making, mutual  
respect, continual learning and  
collaboration.



**SHELTER  
ANIMALS COUNT™**  
the national database



14



15

### Veterinarians can help create a Socially Conscious Animal Community by:

- Offering effective medicine choices
- Providing care to indigent pet owners, when able
- Collaborating with Socially Conscious animal welfare organizations
- Trusting and sharing evidence-based behavior expertise and resources
- Volunteering your time, skill and expertise
- Impacting thoughtful public policy
- Knowing the resources available for pet owners

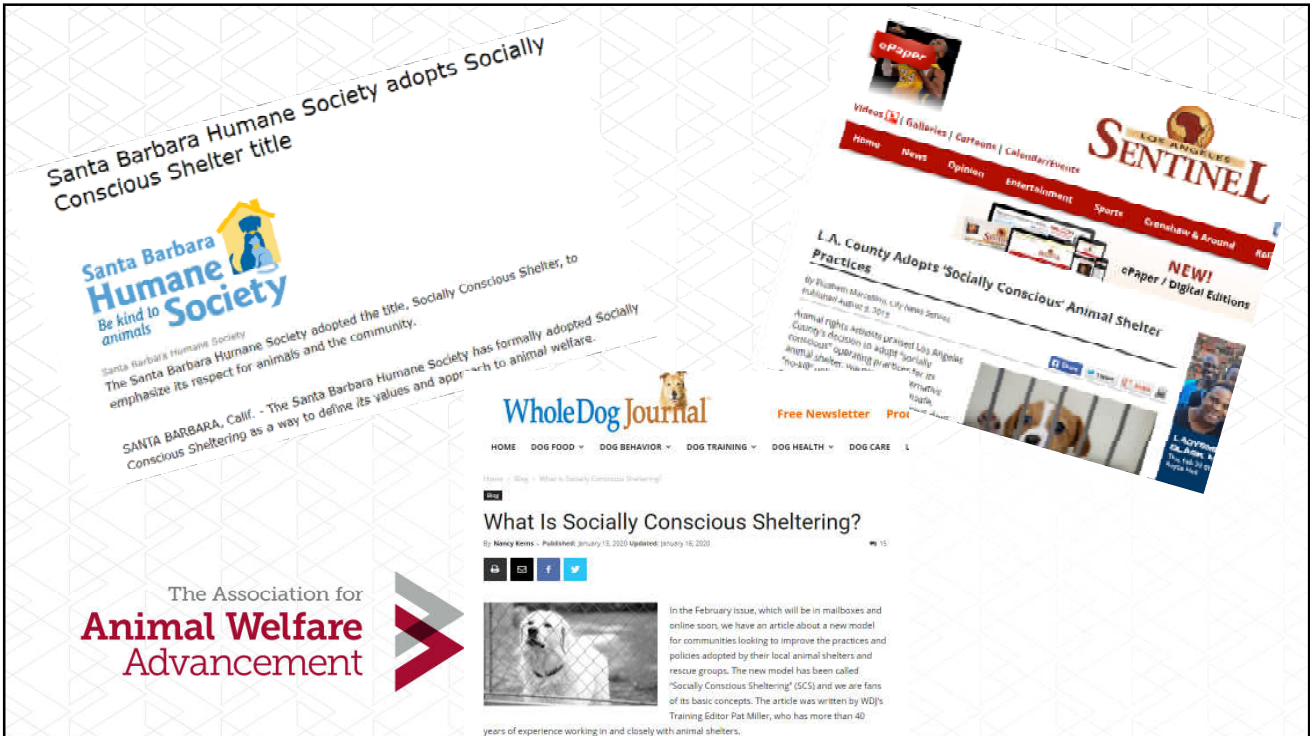
The Association for  
**Animal Welfare  
Advancement**

16





17



18

We encourage other  
organizations to commit to  
being Socially Conscious  
Animal Welfare Organizations

The Association for  
**Animal Welfare**  
Advancement



19

## Shameless Plug

If you are not already a member of  
The Association, please consider joining.  
strength is in our network...join your  
colleagues from all aspects of the industry to  
help continue moving us forward!

**TheAAWA.org**

The Association for  
**Animal Welfare**  
Advancement



20

# Thank you!



*“ Never doubt that a small group of thoughtful, committed citizens can change the world; indeed, it's the only thing that ever has. ”*

Margaret Mead

Jim Tedford

[jtedford@TheAAWA.org](mailto:jtedford@TheAAWA.org)

865-360-6364

The Association for  
**Animal Welfare**  
Advancement



Dr. Apryl Steele

[asteele@ddfl.org](mailto:asteele@ddfl.org)

720-241-7107